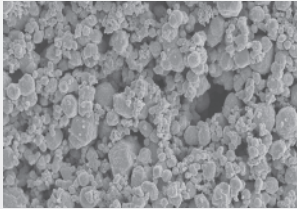


Tungsten Carbide - WCA

WCA- Tungsten Carbide is primarily used to manufacture grade powders for the cemented carbide industry applications include mining, construction, and drilling products.



Typical Chemistry	Weight %
Total Carbon	6.08 to 6.20 Max
Free Carbon	0.10 Max

Product Name	Item Description	APS (FSSS)µm	Oxygen (Weight%)
WCA-06	WCA 0.60 - 0.80µ	0.60 - 0.80	< 0.25
WCA-08	WCA 0.80 - 1.0µ	0.80 - 1.0	<0.15
WCA-10	WCA 1.0 - 1.5µ	1.0 - 1.5	<0.12
WCA-15	WCA 1.5 - 2.0µ	1.5 - 2.0	<0.10
WCA-20	WCA 2.0 - 2.5µ	2.0 - 2.5	<0.08
WCA-25	WCA 2.5 - 3.0µ	2.5 - 3.0	<0.06
WCA-30	WCA 3.0 - 4.0µ	3.0 - 4.0	<0.05
WCA-40	WCA 4.0 - 5.0µ	4.0 - 5.0	<0.05
WCA-50	WCA 5.0 - 6.0µ	5.0 - 6.0	<0.05
WCA-60	WCA 6.0 - 8.0µ	6.0 - 8.0	<0.04
WCA-80	WCA 8.0 - 10.0µ	8.0 - 10.0	<0.03
WCA-100	WCA 10.0 - 15.0µ	10.0 - 15.0	<0.03
WCA-150	WCA 15.0 - 20.0µ	15.0 - 20.0	<0.03
WCA-200	WCA 20.0 - 25.0µ	20.0 - 25.0	<0.03
WCA-250	WCA 25.0 - 30.0µ	25.0 - 30.0	<0.03
WCA-300	WCA 30.0 - 40.0µ	30.0 - 40.0	<0.03
WCA-400	WCA 40.0 - 60.0µ	40.0 - 60.0	<0.03

DiaPac™ U.S.A.

3416 Pinemont, Houston, Texas 77018

Phone 713.715.6300 | Fax 281.768.7919 | orders@diapac.com | info@diapac.com

